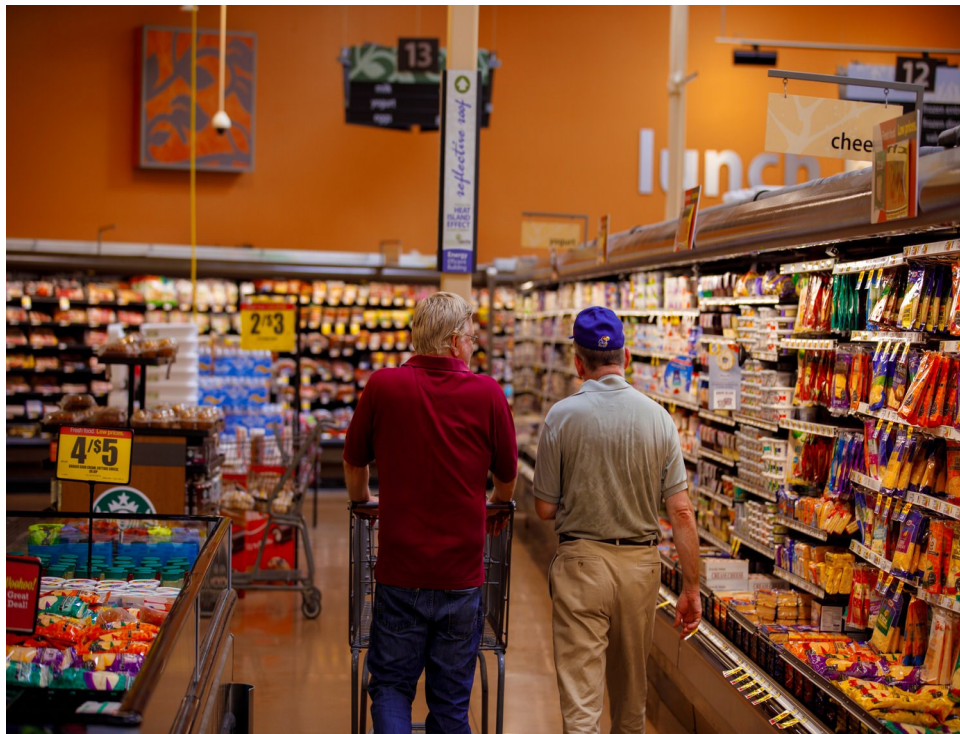


TRINITY

In-Home Care

Local • Compassionate • Affordable

Annual Report 2021



2201 W 25th Street Suite Q
785-842-3159

Lawrence, Kansas 66047
www.tihc.org

Our Mission



Trinity In-Home Care provides non-medical in-home and community support to help elderly and people with disabilities living in Douglas County, Kansas prevent or delay institutionalized long term care with services which foster independence, dignity and freedom to live their best possible quality of life.

*“ It’s not how much you do, but how much love you put in the doing.”
- Mother Teresa*

Inside this issue

Mission	2
Administrative Staff	2
Board of Directors.....	3
Client Stories.....	4
Direct Support Professionals.....	5
2021 Highlights	6

Consider Supporting TIHC

- Donations to Trinity In-Home Care fill the financial gap for clients whose income is too high to qualify for funding sources, but whose limited income cannot afford the full prices of their care on their own.
- Name TIHC as a beneficiary in your will or living trust
- Donate to the Trinity In Home Care Endowment Fund managed by the Douglas County Community Foundation

Administrative Staff



Janine Gracy, Executive Director
Janine@tihc.org

Janine joined Trinity In-Home Care (TIHC) in May of 2021. She brings to the agency several years of experience in non-profit management, community engagement, strategic planning, and program development. She also has extensive background in grant writing. Janine holds a Bachelor of Science and Master of Science in Education from the University of Kansas and is a Certified Health Education Specialist.



Caitlin Schmidt, LMSW, Client Service Coordinator
Caitlin@tihc.org

Caitlin joined Trinity In-Home Care as Service Coordinator in July of 2014. Caitlin holds a Masters in Clinical Social Work and a Bachelors of Social Welfare from the University of Kansas. She has been active in the social work field for almost 15 years and has been licensed at the Master's level since 2013. Caitlin's previous experience is in geriatric and mental health care settings.



John Pryor, Client Service Administrator/Office Manager
John@tihc.org

John joined Trinity In-Home Care in 2015. He brings vast experience with both non-profit agencies and business management to the team. Additionally, John was a caregiver for his mother, giving him the personal experience which our clients and DSPs will appreciate. John enjoys reading, music and handyman projects.



Trinity In-Home Care 2022 Board of Directors

Trinity Turns 45!

Trinity was founded 45 years ago on October 24, 1976!

Trinity In-Home Care strives to provide a community-based alternative to prevent or delay the institutionalization of children and adults with disabilities, and to assist older adults to remain in their own homes, with family or primary caregivers.

Our services are personalized to the client's needs and Trinity In-Home Care's Direct Support Professionals (DSPs) are carefully matched to the client. Our fees are below local and national averages.

Individuals and families in Douglas County have benefited from Trinity In-Home Care services since 1976. Forty-Five years has brought amazing growth to the agency. Starting with 5 clients served the first year, Trinity In-Home Care now serves almost 100 people annually, employees nearly 100 annually, and provides approximately 4,000 hours of personalized care each month.

Trinity In-Home Care is a licensed, private 501c3 non-profit agency run by a volunteer Board of Directors. Trinity In-Home Care needs financial support in order to provide KanCare (Kansas Medicaid) and sliding scale services to those who are otherwise unable to afford support.

Board of Directors



President
Carolyn Clark
Attorney,
Law Office of Carolyn Craycraft Clark



Vice President
Judy Juneau
Retired Principal
Lawrence Alternative High School



Secretary
Mack Curry
Attorney



Treasurer
Marty Yost
Operations Manager
CEK Insurance



Scott Criqui
HR Business Partner
The University of Kansas Health System



Gloria F Dikeogu
Director & Professor
Ottawa University Library



Jaime Gillman
Vice President
Capitol Federal



Jalon Hutchens
Admissions
Lawrence Memorial Hospital



Kerri Johnson
Internal Operations Manager
KU Innovation Park



Nate Morsches
Owner
Restaurant, Pub & Games



Stephanie Wilson
Past President
Attorney/Owner
Wilson Elder Law, LLC



Love and Loss

At Trinity, we have loved, and we have lost. Recently we lost a beautiful soul. Cynthia Marie Falley 'Sissy' was one of those sweet, spunky clients that was cared for by family and friends employed by Trinity. Sissy's body may have limited her, but according to her family and DSPs, that did not slow down her incredible spirit. She was feisty and direct. She loved coffee. She loved writing her name with colored markers. She loved holding babies. She loved the book Harry the Dirty Dog. She loved her teachers. She really loved her phone. She loved KU. She loved her family above all. Sissy was only 25 when she left this earth. It was totally unexpected and left a void that will be hard to fill. Fly high, sweet girl! Trinity was honored to be a part of your life.



Cynthia Falley

A Good Match

'Sharon', is a single mother of 'Kingsley', a 6 year old with severe autism. Sharon has two jobs but because of the pandemic she had lost her traditional child-care and was struggling to work enough to cover expenses. Her co-worker 'Emma' wanted to pay for respite care to help her friend get back on her feet but simply didn't know how to go about hiring and coordinating employees, so she turned to us. Earlier this summer John hired 'Janessa' who recently came into the office inquiring about more hours especially with a younger person with intellectual or developmental disabilities as that is her study area at KU. We told her about Kingsley, and she was thrilled! Janessa shared that she has a seven-year-old brother with autism who she misses now that she is away at college.



Mickey Mouse and Louise

One of our clients called and needed a ride from the hospital. Her DSP was in class and our client finished her appointment earlier than expected. I said, "I'm on my way"! She was worried that I would get in trouble at work for leaving to assist her. I told her that it wasn't a problem! When I arrived, 'Louise' got into my car and then I loaded up her walker. As we pulled away she let me know she was going to be 93 years old and was born the same year Mickey Mouse made his debut! She usually wears Mickey Mouse socks and loves anything Mickey. She told me she loves to laugh and that is what keeps her young! 'Louise's' husband passed in 2019 and was a mathematics professor in KU's School of Education for 50 years. They traveled the world together and she misses him dearly. 'Louise' has been a client of Trinity since 2017. Our DSP helps her with house-keeping and laundry and this is what keeps her in her own home!



Direct Support Professional Trainings

In-person DSP Trainings resumed in 2021. Caitlin's curriculum for the continuing education trainings were designed with the mental health of the DSPs in mind. One training was called 'Pandemic Check-In' which allowed the DSPs to discuss stress, grief and coping related to COVID. In another training Caitlin provided information on Trauma Awareness. This training allowed DSPs to understand how to support someone who has experienced trauma. By realizing that trauma is about getting hurt when you had no power or control over the situation, DSPs have an increased understanding on how to support those who may have experienced trauma. Our DSPs were so thankful to be able to examine these topics. Caitlin received much appreciation as our caregivers experienced a tremendous amount of stress during the current pandemic.



*"Caregiving often calls us to lean into love we didn't know possible."
— Tia Walker, Author*

We Need More Direct Support Professionals

Are you looking for a career where you can help people? Where going to work is more than just a job? Where you can help an older person or a person with a disability live a full life?

If so, have you thought about a job as a Direct Support Professional?

If you think this type of work might be right for you, please apply today at www.tihc.org/employment

What is a Direct Support Professional?

If you choose to be a Direct Support Professional, you will work one-on-one with someone in their home, or in the community as you complete errands or participate in

activities. As a Direct Support Professional, your goal is to increase or maintain a client's quality of life by providing support and respite services. You might help with:

- Cooking
- Cleaning
- Feeding, bathing, dressing, grooming or toileting
- Driving clients to appointments
- Shopping
- Providing support at work, school or in the community
- Being a companion

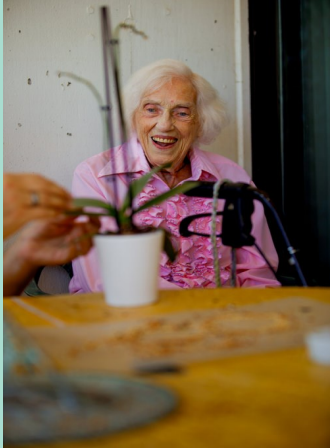
Many Direct Support Professionals find their work to be more than just a job, because of the satisfaction they get in helping others.



2021 Service Hours: 43,159

2021 Number of Clients 70

2021 Number of DSP's 85



2021 Highlights

- Trinity turned 45 on October 24!
- Trinity received a much-needed makeover (due to her delicate age) - New paint and new carpet
- New ED hired in May and moved office downstairs to create a team atmosphere
- Staff implemented use of Clear Care software to assist with scheduling and care coordination
- Pandemic continued. Employee COVID Vaccines were strongly recommended, and vaccine records were updated.
- Increased JAAA Reimbursement from 18.50 to 25.00. Increased PACE Reimbursement from 16.00 to 25.00. IDD Overnight and Enhanced Care increased from 85.13 to 91.18
- Payroll was outsourced to Kindred CPA.
- Giving for Good raised \$2,045, plus a \$1,023 Match from DCCF for a total of \$3068
- In 2021 Trinity received a total of \$7,435.62 in donationsand 4 new Board Members!

Thank YOU for Making 2021 a Great Year!

Financials

Trinity In-Home Care is a 501(c)3 Douglas County, Kansas non-profit organization (FEIN 48-08622381)



We rely on the support of friends like you to provide critical services to Douglas County's most vulnerable citizens. Donations to Trinity In-Home Care fill the financial gap for clients whose income is too high to qualify for funding sources, but whose limited income cannot afford the full prices of their care on their own.

Financial Statement as of December 2020*

2201 W 25th St
Suite Q
Lawrence, KS 66047
Phone: 785-842-3159
Fax: 785-842-7061
E-mail: janine@tihc.org
Website: www.TIHC.ORG

Assets	\$ 398,381
Liabilities	\$ 96,107
Total Revenue	\$ 958,748
Operating Expenses	\$ 854,651
Grants & Fundraising	\$ 8,345

*audited financials

Independent Auditors
SS&C Advisors, Inc. 3320 Clinton Parkway Court, Suite 120 Lawrence, KS 66047